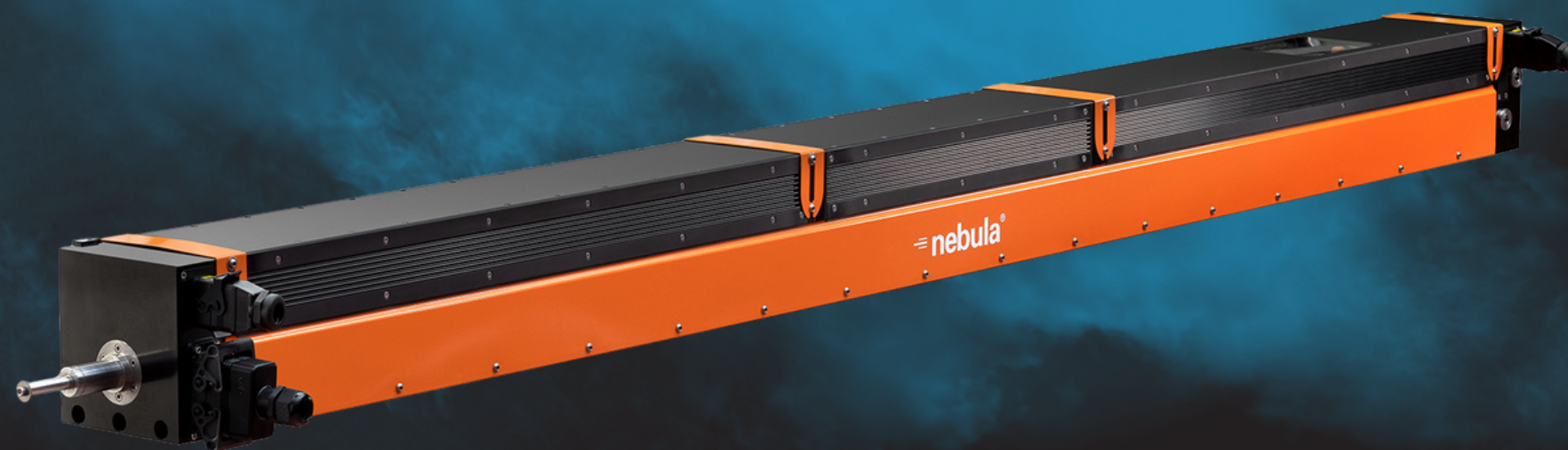


# CASE STUDY

# NEBULA

MOISTURE CONTROL

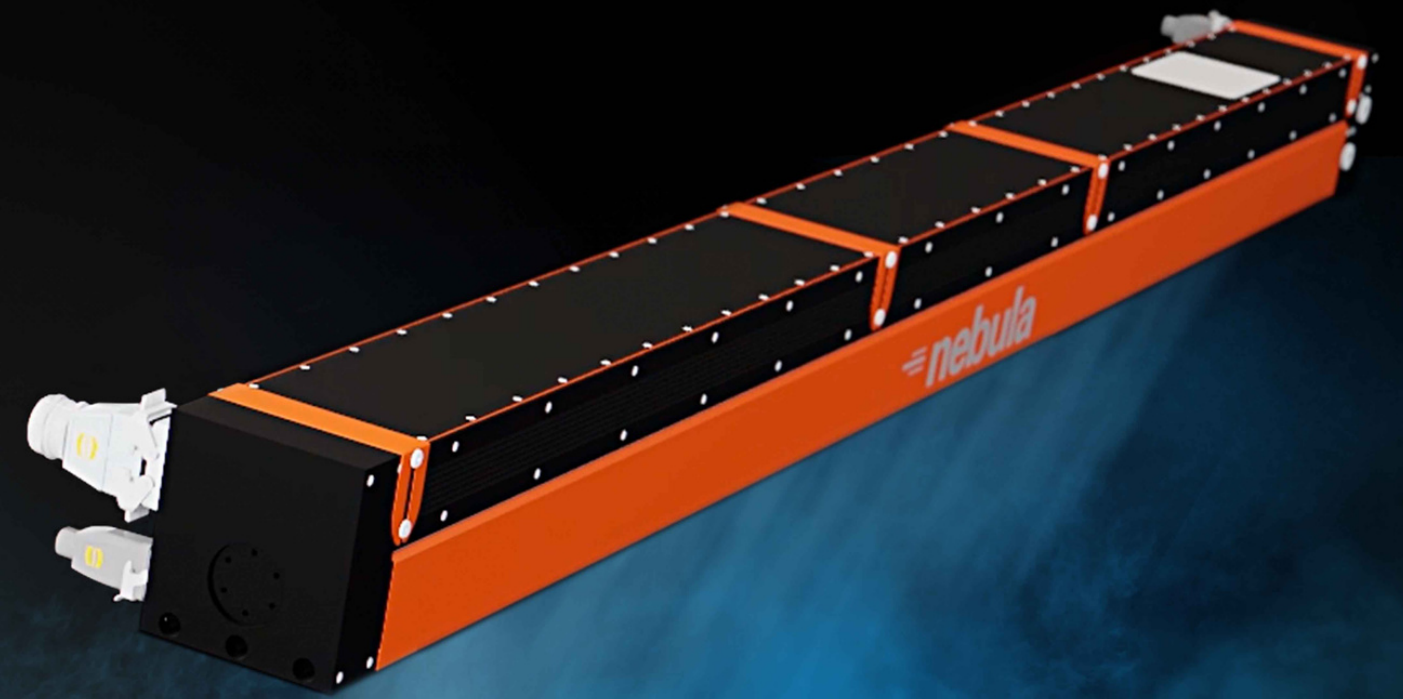


 **renova**



# NEBULA

In order to not stress the cardboard and ensure a high quality product, humidity needs to be kept constant. Since the humidity and temperature parameters directly affect each other, we have created a solution to adjust and keep them constant through the whole process: **nebula** moisture control integrated system





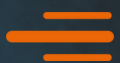
# THE CUSTOMER APPLICATION

## OCCURRED PROBLEMS



We have been contacted by the customer to solve the:

- 1 **WARPING** problem
- 2 overconsumption of **STARCH** to compensate the lack of moisture (single facer).





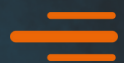
# THE NEBULA INSTALLATION

2023



**CORRUGATOR:**  
2500 mm width

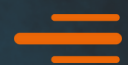
**NEBULA SET:**  
1 MOISTURIZER (pre-heater)  
1 MOISTURIZER (double backer)  
1 SCANNER WITH 'S' MOVEMENT  
1 FIXED SCANNER  
1 CABINET





# THE NEBULA INSTALLATION

2023





# THE NEBULA INSTALLATION

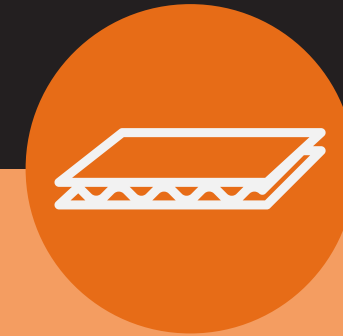
## BENEFITS



**-20%**  
STARCH  
CONSUMPTION



**+30%**  
PRODUCTION  
SPEED



WARP  
PROBLEM  
ELIMINATION

